

ART ASSEMBLY

2019

FREE to SEE in London

FREE
to
SEE
in
London



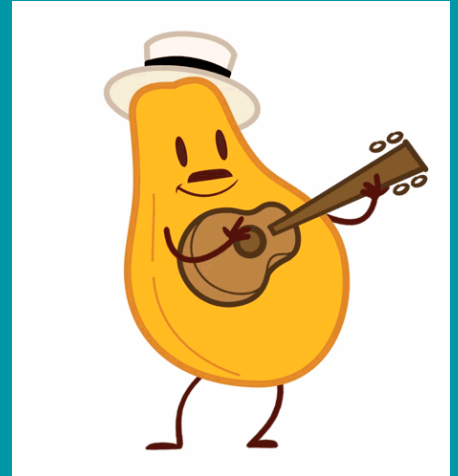


By looking at his portrait we can see the way that he wanted to be viewed by the public, as a 'strong and stable' leader for the country.

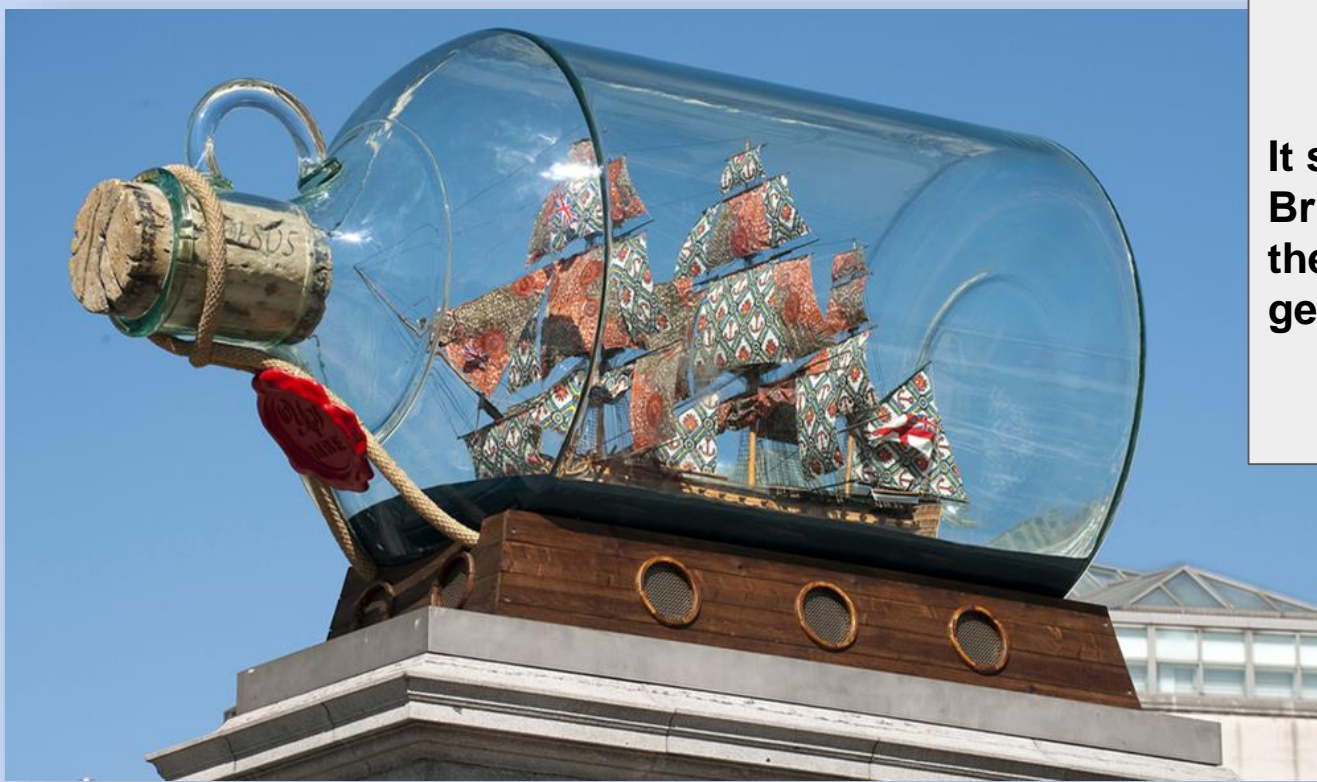
**Portrait of Charles I by
Daniel Mytens**

Painted from 1629-40

Location: National Portrait
Gallery



Mr Gunn



It says so much about
Britain's colonial past from
the point of view of a 2nd
generation immigrant

Yinka Shonibare
'Nelson's Ship in a Bottle'
Greenwich Maritime Museum





I find it fascinating, in part because of the story it seems to tell

Joseph Wright
'An Experiment on a Bird in an Air Pump'
1768
The National Gallery





Turner
'Rain, steam and speed'
1844
The National Gallery

It implies so much movement and sound and atmosphere



Ms Spalter

Victoria & Albert Museum Fashion Collection

Elaine

It's a beautiful building and
exhibition space...





'The Lady of Shalott'
John William Waterhouse
1888
Tate Britain

I love the angst, her beauty and the sadness of her story. This painting represents longing.





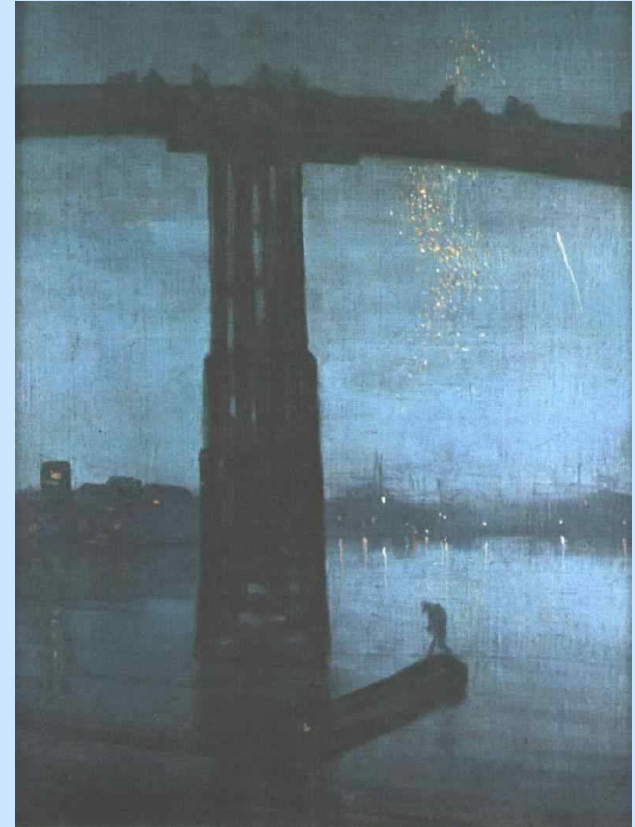
It feels a bit sinister but up close you can't help but reach out to touch it and feel the smoothness of the stone.

'Monolith Empyrean', sculpture by **Barbara Hepworth**
Grounds of Kenwood House, on Hampstead Heath



“I love the crepuscular atmosphere that Whistler creates in the painting - and the way in which he uses and adapts ideas and imagery from Japanese artists such as Hokusai in his depiction of London.

James Abbott McNeill Whistler
‘Nocturne: Blue and Gold - Old Battersea Bridge’
1872
Tate Britain





There is a sensitivity ,
energy and freshness of an
artist working out their idea.

Mr Aronsohn
River God by Giambologna
1580
Victoria & Albert Museum





The level of detail is incredible. It's impressive how much detail he is able to put in huge paintings.

Canaletto
'Venice: the Bacino di San Marco from San Giorgio Maggiore'
C. 1735 – 1744
Wallace Collection



I like the very different body language of the two figures.



David Hockney
'My Parents'
1977, Oil On Canvas
Tate Britain



John Constable
'Sketch for Hadleigh Castle'
C. 1828-9
Tate Britain

It's beautiful and wild. I love the sky and the sea and the ruins of the castle. Best of all though, is the little loyal sheepdog trotting behind its red-handkerchief master.





Shepherd and his Sheep by Elizabeth Frink
1975
Paternoster Square, near St.Pauls

Unlike all the statues of famous people in central London, this reminds us that ordinary people lived ordinary lives in London too.



