

# The Theory of Careers

Six personality types = six types of work environments

- Realistic
- Investigative
- Artistic
- Social
- Enterprising
- Conventional



# Realistic

Independent and practical, they are often good in emergencies. A realistic personality type can deal well with the physical world, which often means they are very independent, practical minded and strong.

## Personality trait: Doing

Jobs may involve the use of tools, machines, or physical skill. Builders like working with their hands and bodies, plants, animals, and working outdoors.



# Investigative

Likes to discover and research ideas, observe, investigate and experiment, ask questions and solve problems. Thinking analytically and logically, computing, communicating by writing and speaking, designing, formulating, calculating, diagnosing, experimenting, investigating

## Personality trait: THINKING

Thinking jobs involve theory, research, and intellectual inquiry. Thinkers like working with ideas and concepts, and enjoy science, technology.

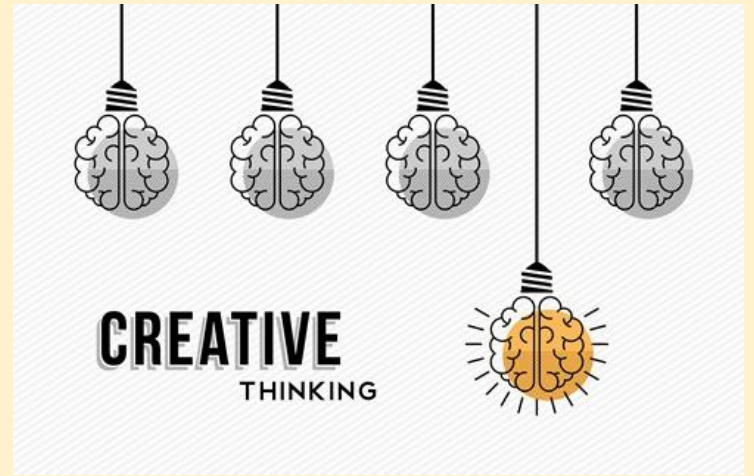


# Artistic

Good at innovating or using their imagination and creativity. They are expressive, original, and independent often working in areas such as creative writing, drama, crafts, music, or art.

## Personality trait: CREATING

Creating jobs involve art, design, language, and self-expression. Creators like working in unstructured environments and producing something unique.



# Social

Likes to work with people to teach, train and inform, help, treat, heal and cure, greet, concerned for the wellbeing and welfare of others

## Personality trait: HELPING

Helping jobs involve assisting, teaching, coaching, and serving other people. Helpers like working in cooperative environments to improve the lives of others.



# Enterprising

Likes meeting people, leading, talking to and influencing others, encouraging others, working in business. They are often energetic, ambitious, and sociable who are good at politics, leading people and selling things or ideas.

## Personality trait: PERSUADING

Persuading jobs involve leading, motivating, and influencing others. Persuaders like working in positions of power to make decisions and carry out projects.



# Conventional

Organising and being accurate, following procedures, working with data or numbers, planning work and events. They value people who are orderly, and good at following a set plan, good at working with written records and numbers in a systematic, orderly way.



## Personality trait: ORGANISING

Organising jobs involve managing data, information, and processes. Organisers like to work in structured environments to complete tasks with precision and accuracy.



'My top tips, how you find the best workplace for you, are to try everything. Don't think that this isn't for you, or that's not for you. Try it'

<https://www.bbc.co.uk/bitesize/articles/zd77382>

## Care worker

'I never thought I'd be running a business!'

<https://www.bbc.co.uk/bitesize/articles/zjmkpg8>

## Social enterprise owner

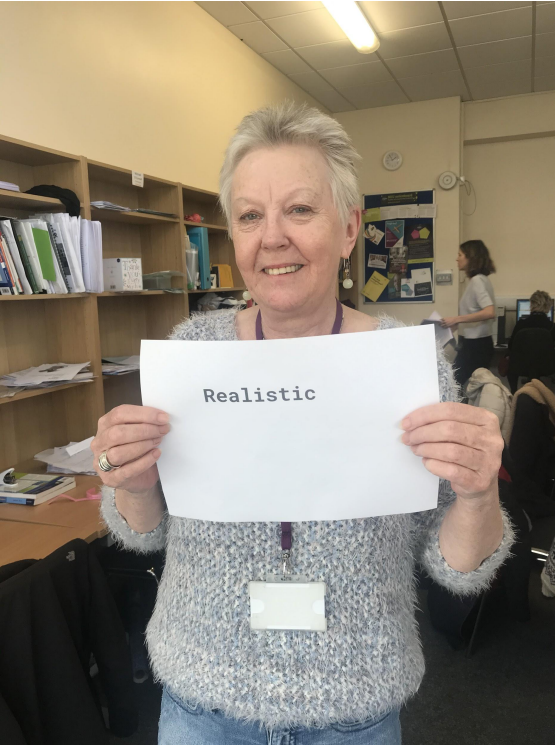
'Gaining practical experience is the best way to figure out which field of work is best for you'

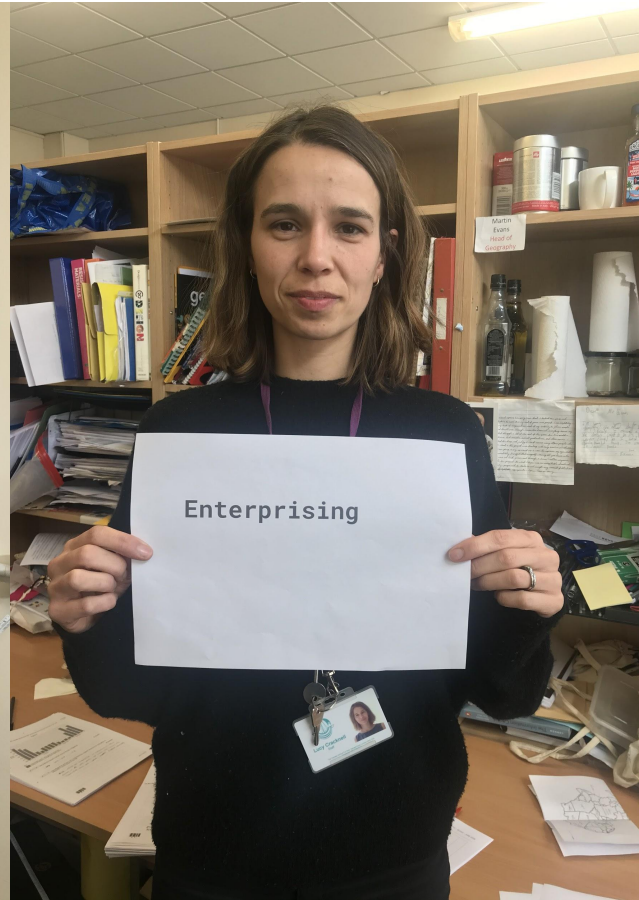
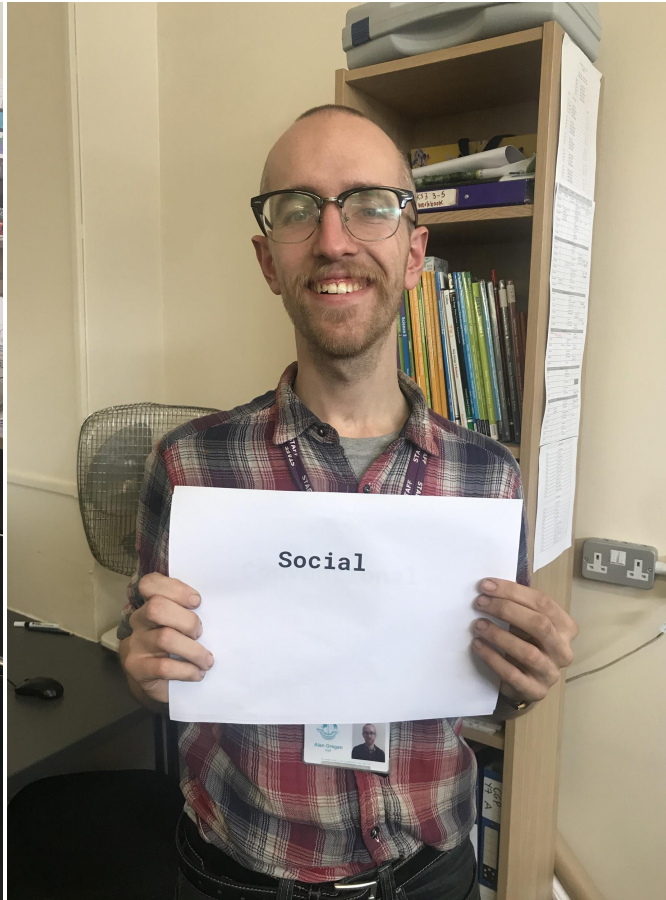
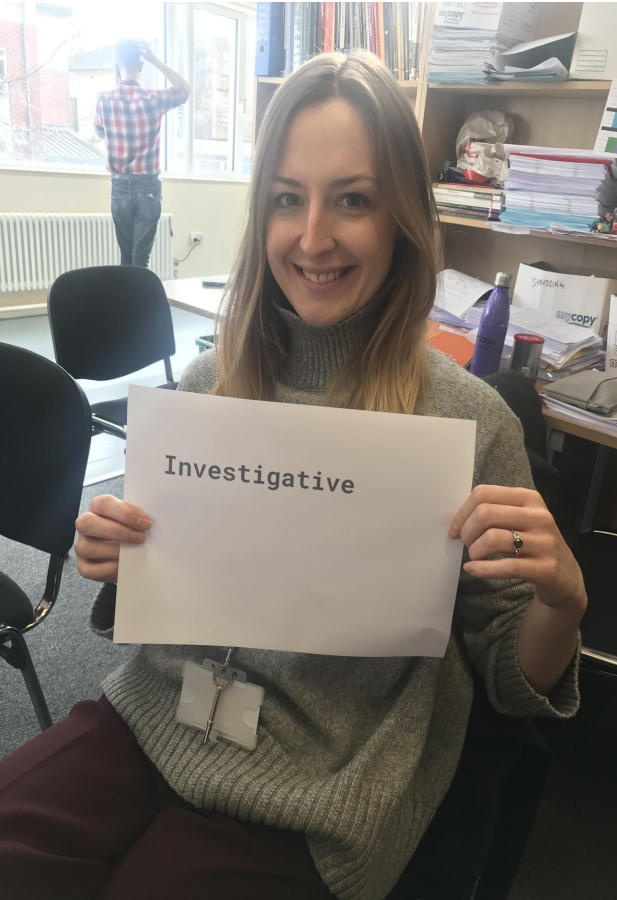
## Engineer

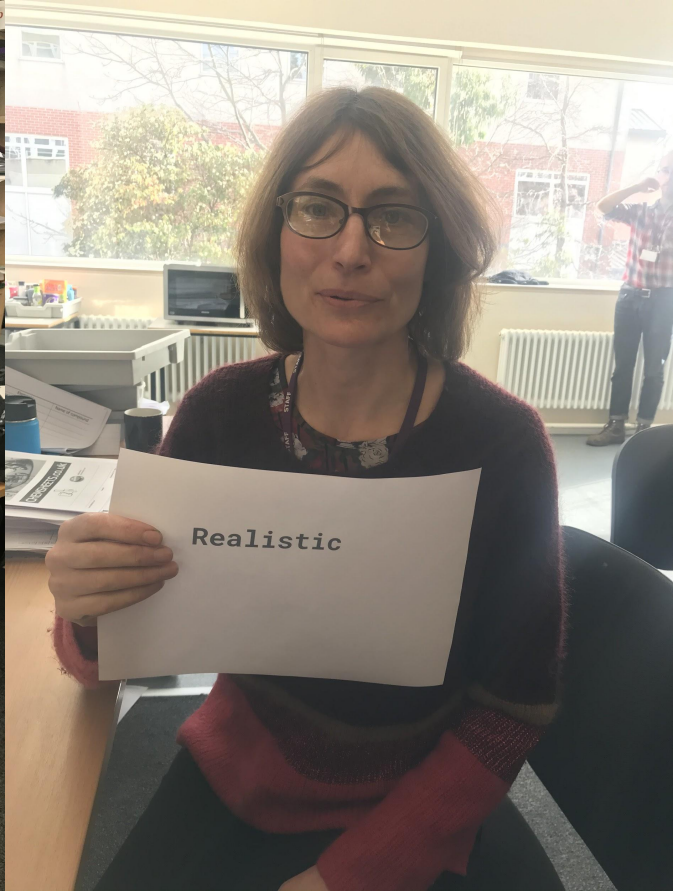
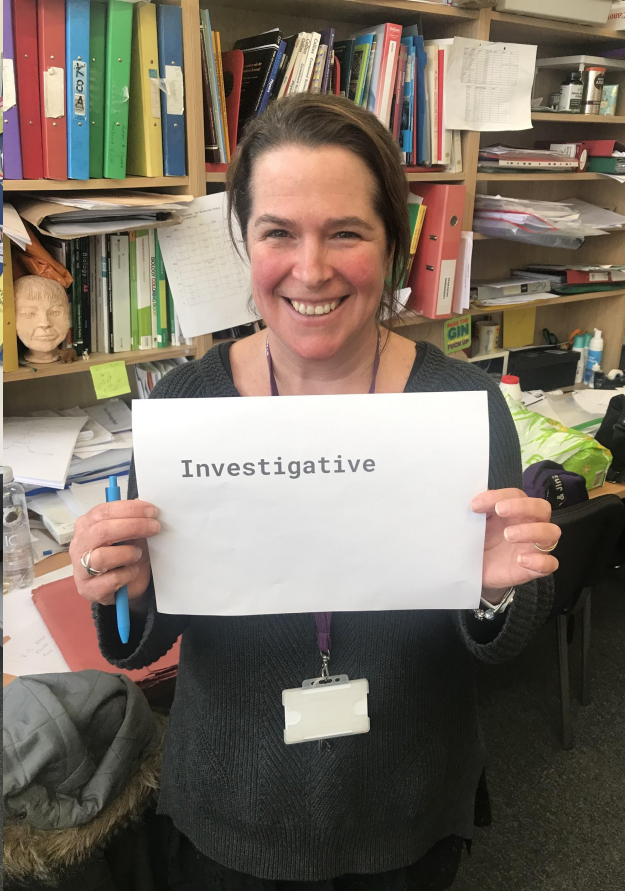
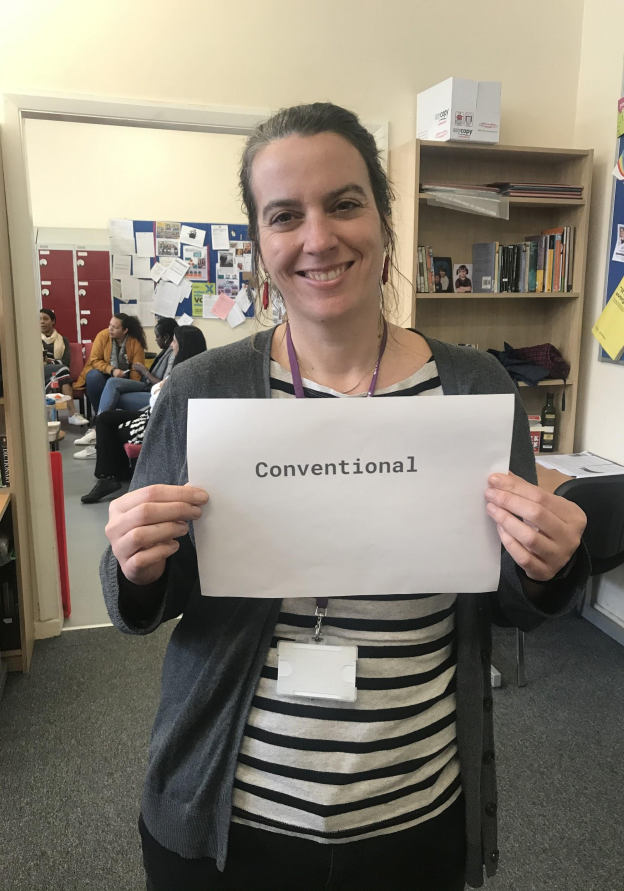
<https://www.bbc.co.uk/bitesize/articles/zjw7bdm>



# Which personality type are you??









Of course you can also be more than one personality type!